

PUSD At A Glance: 2008-2009



Pasadena Unified School District

351 South Hudson Avenue • Pasadena, CA 91109 • 626.795.6981 • www.pusd.us

APPROACH TO EXCELLENCE II 2008-09 PRIORITIES

- ◆ Focus on Student Achievement
- ◆ Rigor and Relevance
- ◆ Organizational Capacity

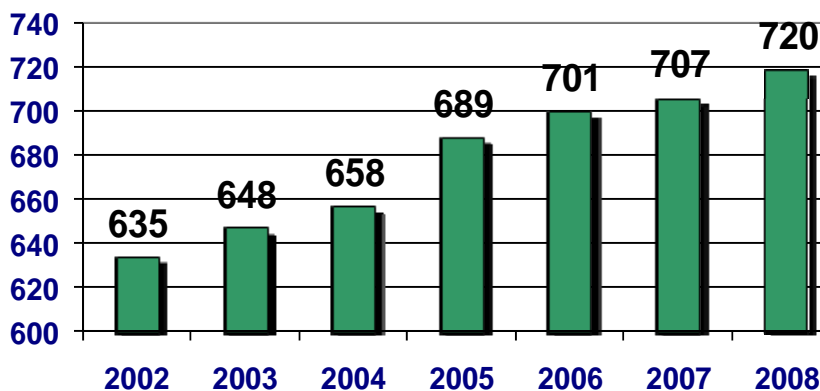
BREAKTHROUGH RESULTS

Awards & Recognitions

- ◆ 7 California Distinguished School Awards
- ◆ 13 Title I Academic Achievement Awards
- ◆ America's Top High Schools Award
- ◆ Blue Ribbon Award Nominee
- ◆ 21 National Board Certified Teachers

Student Achievement

PUSD Academic Performance Index



College Acceptances

Arizona State University	Stillman College
California Institute of the Arts	Spelman College
California State University	University of California
◆ Northridge	◆ Berkeley
◆ Polytechnic Pomona	◆ Davis
◆ Los Angeles	◆ Los Angeles
◆ Long Beach	◆ Irvine
◆ San Francisco	◆ Merced
Dartmouth College	◆ Riverside
Fashion Institute of Design & Merchandising	◆ Santa Barbara
Le Cordon Bleu	◆ Santa Cruz
Loyola Marymount University	◆ San Diego
Occidental College	University of Hawaii, Hilo
Pasadena City College	University of Southern California
Stanford University	West Point Military Academy

Financial Information

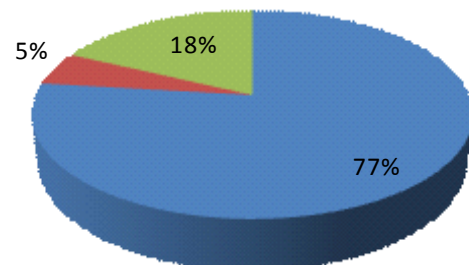
2008-09 Adopted Budget: \$191.8 Million

State Revenue: \$164.5 Million

Federal Revenue: \$20.8 Million

Local Revenue: \$6.4 Million

2008 Combined General Fund Expenditures



- Salaries and Benefits
- Supplies and Equipment
- Outside Services

PUSD At A Glance: 2008-09



Pasadena Unified School District

351 South Hudson Avenue • Pasadena, CA 91109 • 626.795.6981 • www.pusd.us

PUSD SCHOOLS

NUMBER OF CAMPUSES	
Type	Number
Elementary	20
Middle	3
High	4
Continuation	1
TOTAL	29
<i>Charter Schools</i>	<i>4</i>

ENROLLMENT	
Elementary (K-6)	9,622
Middle (6-8)	3,599
High (9-12)	5,172
TOTAL	18,393

PUSD STUDENTS

Special Programs		
English Learners	4,494	21.6%
Reclassified	536	2.6%
Free/Reduced Price Meals	12,582	64.2%
Special Education	2,408	11.8%

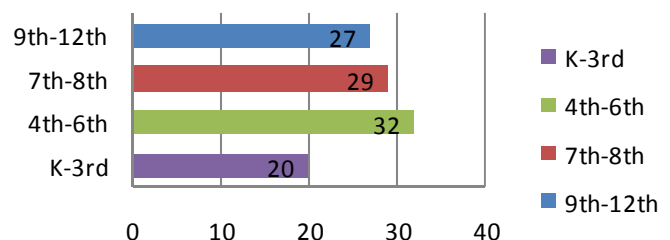
ETHNIC DISTRIBUTION OF STUDENTS

African-American	20.8%
American Indian	0.2%
Asian	3.1%
Filipino	1.7%
Hispanic	57.5%
Pacific Islander	0.2%
White	16.0%
Other	0.3%

PUSD EMPLOYEES

Number of Employees	
Teachers	1,007
Pupil Support Services	87
Certificated Administrators	70
Classified	1,092

Student-Teacher Ratio



The total area of PUSD is 76 square miles. PUSD serves the communities of Pasadena, Altadena and Sierra Madre.